

CUSTOMIZE YOUR SOCKET MOUNTING

STEP 1: SELECT YOUR PREFERRED MOUNT

Flush Mounts

Fits into an existing space in your vehicle, camper or application, giving your accessory socket installation a superior look. There are three flush mounts to choose from; single, double and triple.



STEP 2: SELECT YOUR PREFERRED SOCKET

There is a wide range of sockets to choose from. See pages 12-13.



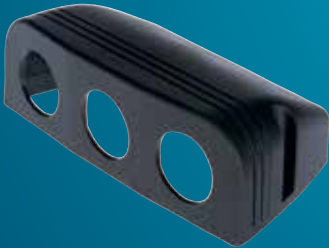
STEP 3: MOUNT YOUR SOCKET

By combining your preferred mount with your preferred socket, you can create any mounting solution you need.



Surface Mounts

Creates the additional space you need in your vehicle, camper or application. Professional moulded design for a refined finish. There are three surface mounts to choose from; single, double and triple.



MOUNT AND SOCKETS ARE INTERCHANGEABLE



SINGLE FLUSH MOUNT PANEL

PART NO. TDR06111



SPECIFICATIONS	
OVERALL DIMENSIONS	60mm x 43mm
CENTRE TO CENTRE	48mm
SIZE	29mm mounting hole
PURPOSE	Suitable for housing the Thunder socket range

DOUBLE FLUSH MOUNT PANEL

PART NO. TDR06112



SPECIFICATIONS	
OVERALL DIMENSIONS	105mm x 45mm
CENTRE TO CENTRE	86mm
SIZE	29mm mounting hole
PURPOSE	Suitable for housing the Thunder socket range

TRIPLE FLUSH MOUNT PANEL

PART NO. TDR06113



SPECIFICATIONS	
OVERALL DIMENSIONS	150mm x 43mm
CENTRE TO CENTRE	132mm
SIZE	29mm mounting hole
PURPOSE	Suitable for housing the Thunder socket range

SINGLE SURFACE MOUNT PANEL

PART NO. TDR06121



SPECIFICATIONS	
DIMENSIONS	50mm x 54mm x 80mm
SIZE	29mm mounting hole
PURPOSE	Suitable for housing the Thunder socket range

DOUBLE SURFACE MOUNT PANEL

PART NO. TDR06122



SPECIFICATIONS	
DIMENSIONS	50mm x 96mm x 80mm
SIZE	29mm mounting hole
PURPOSE	Suitable for housing the Thunder socket range

TRIPLE SURFACE MOUNT PANEL

PART NO. TDR06123



SPECIFICATIONS	
DIMENSIONS	50mm x 148mm x 80mm
SIZE	29mm mounting hole
PURPOSE	Suitable for housing the Thunder socket range

POWER SOCKET

PART NO. TDR06101



SPECIFICATIONS	
VOLTAGE	12/24 Volts
AMPS	20 Amp @ 12 Volts
MOUNT	Dash or panel
ILLUMINATION	Blue LED back light
SIZE	29mm mounting hole
TERMINALS	2 x blade

DOUBLE USB SOCKET

PART NO. TDR06102



SPECIFICATIONS	
VOLTAGE	12/24 Volts
AMPS	1 x 1 Amp, 1 x 2.1 Amp
MOUNT	Dash or panel
ILLUMINATION	Blue LED back light
SIZE	29mm mounting hole
TERMINALS	2 x blade

MERIT SOCKET

PART NO. TDR06103



SPECIFICATIONS	
VOLTAGE	12/24 Volts
AMPS	16 Amp
MOUNT	Dash or panel
SIZE	29mm mounting hole
TERMINALS	2 x blade

ENGEL STYLE SOCKET

PART NO. TDR06107



SPECIFICATIONS	
VOLTAGE	12/24 Volts
AMPS	15 Amp @ 12 Volts 7.5 Amp @ 24 Volts
MOUNT	Dash or panel
SIZE	29mm mounting hole
TERMINALS	2 x blade

VOLTMETER

PART NO. TDR06104



SPECIFICATIONS	
VOLTAGE	12/24 Volts
MOUNT	Socket mount, dash or panel
DISPLAY	Blue LED
RANGE	5 - 30 Volts
SIZE	29mm diameter
PURPOSE	Can be used to monitor your trailer breakaway battery

AMMETER

PART NO. TDR06105



SPECIFICATIONS	
VOLTAGE	12/24 Volts
MOUNT	Socket mount, dash or panel
DISPLAY	Blue LED
RANGE	0 - 10 Amp
SIZE	29mm diameter
PURPOSE	Can be used to monitor your accessory current draw

VOLT/AMP DISPLAY

PART NO. TDR06106



SPECIFICATIONS	
VOLTAGE	12/24 Volts
MOUNT	Dash or panel
DISPLAY	Blue LED
RANGE	Voltage: 5 - 30 Volts Current: 0 - 10 Amp
SIZE	29mm diameter
PURPOSE	Can be used to monitor your trailer breakaway battery and your accessory current draw

CIGARETTE LIGHTER PLUG

PART NO. TDR06017



SPECIFICATIONS	
VOLTAGE	12/24 Volts
AMPS	10 Amp
LENGTH	200mm pigtail
FEATURES	With mini blade fuse